

Artificial Intelligence and Christianity

Ron Jue, *Elder*

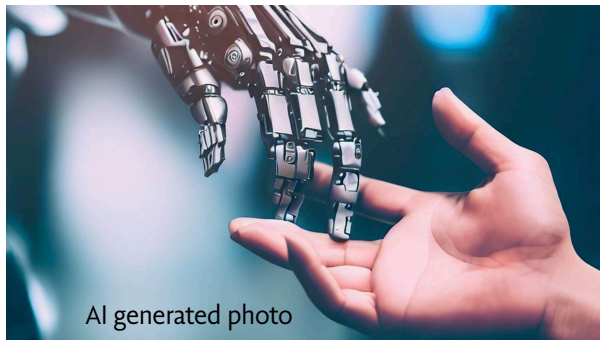
The term AI (coined in the 1950's) refers to the simulation of human intelligence by machines. Capabilities of AI are ever changing as technologies develop. Simply put, AI is the ability of a computer to do tasks that are usually done by humans because they require human intelligence and discernment.

AI will affect Gospel-centered ministry by providing new tools and methods for sharing the Gospel and reaching people with the message of Jesus. For example, AI algorithms can be used to personalize and target digital evangelism efforts, reaching people with tailored messages and resources based on their specific interests and needs. Overall, AI has the potential to enhance the efficiency and effectiveness of Gospel-centered ministry efforts.

In the near future AI can provide greater access to faith-based content and resources, as well as aiding in pastoral activities. AI can parse religious texts and identify trends, allowing pastors to target their sermons for maximum impact. AI may also be useful in gathering insights from sermons or helping prepare messages, as well as providing personalized advice and counseling to churchgoers. As AI becomes more sophisticated, churches will be able to take advantage of new technologies and resources in order to better engage members and guests, and create a more effective spiritual experience.

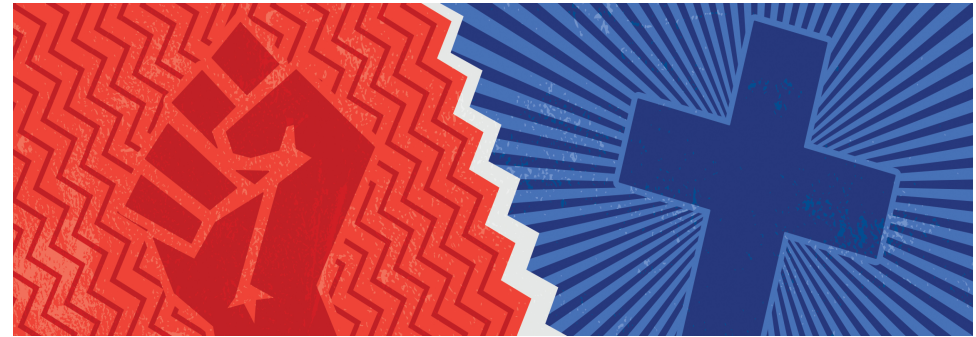
Overall, the use of AI in ministry will likely depend on the specific needs and goals of each individual church. While AI may be able to assist with certain tasks and activities, it's important to remember that it can never replace the human element of ministry. Only people can truly provide the personal connection and spiritual guidance that is the heart of Gospel-centered ministry.

P.S. Except for the introduction and postscript, this article was completely written by ChatGPT, an AI language processing application capable of producing written content.



Welcome to Journey!

EVANGELICAL CHURCH



Is Socialism Biblical?

Christ Transforms Culture



A joyful member of EFCA • efca.org
14614 Magnolia Street, Westminster, CA 92683
(714) 893-5500 • JourneyEC.org

Order of Service

August 20th, 2023

Welcome & Call To Worship	Hiro
Worship	Kyle & Congregation
Sermon.....	Is Socialism Christian? Ted
Song of Response	Kyle & Congregation
Benediction	Christian



Deacons

Allie Wong
Anne Chou
Dave McLendon
Joshua Cain
Pat Leung
Paulah Wong
Teresa Jue
Wesley Lin

Elders

Cliff Char—Young Adults, Worship Music
Devin Wong—GO Team, Website
Hiro Kono—Cong. Dev., Pastoral Care, Women’s Ministry
Peter Leung—Children, Welcome
Phil Jen Kin—Facilities, Chinese, Security, Personnel
Rick Chou—Nominations, Multimedia, Small Groups
Ron Jue—Growth & Legacy, Deacons Liaison, CLT Chair
Victor Wong—Campus, Finance, Hospitality, SERVE, Vietnamese

Staff

Ted Kau—Senior Pastor
Paul Eng—Chinese Pastor
Peter Leung—Children Director

Roger Yee—Administrator
Ewin Grace—Pastor of Small Groups
Christian Lissner—Assistant Minister
Amy Mu—Office & Ministry Assistant

Is Socialism Biblical?

Ted Kau • “Christ Transforms Culture” Series

Each one must give as he has decided in his heart, not reluctantly or under compulsion, for God loves a cheerful giver—2 Corinthians 9:7

Trends among Americans regarding socialism

Core issues to consider:

	Socialism	Christianity
Ultimate Problem	Unequal distribution of _____ Solution: redistribution	Sin Solution: Christ’s atonement, Rom 6:23
Ownership	Involuntary _____	Freely Given Acts 2:44-45, Ex. 20:15, Lk 3:11, 2 Cor 9:7
Work	_____ Rewarded	Industriousness Rewarded 2 Thess. 3:10; 1 Tim. 5:8, 10
Themes	Class envy, wage war against rich	Contentment, “_____ In Christ” Prov. 14:31; Ex. 20:17; Eph 2:13-14
Historical Pattern	Totalitarianism	According to _____

Discussion questions, application

- How can I teach my (future) kids/grandkids to be more self-sufficient and less self-entitled?
- What are the errors of using the following verses to support socialism? Think about the context and the central truth of each passage: Is 2:4; Mtt. 6:24, 19:23-24, 21:12-13; Acts 2:44-45?
- Who or what do I envy? What is my thought process in determining the source of my happiness?
- Gal. 5:21 states that envy is a work of the flesh. How does one mortify the sin of envy?

Ways to get involved at Journey:

Today: **Hot Dog & Chili Dog Lunch**. Stick around after service!

Today: **Basketball Ministry** (1-3pm, Gym). Email wes@journeyec.org for details.

9/1–4: **YA Retreat**. Email wes@journeyec.org and happyluchi@gmail.com for deets.

9/7: **Women’s Bible Study**. The Book of Job by Frances Chan (6:45pm, 8 sessions online, 1st & 3rd Thurs.). Join us as we learn how Job responded faithfully to difficult trials. Contact Trudee, WomensMinistry@JourneyEC.org for details.

9/10: **Adult Bible Class** (9-10am, 2nd & 4th Sun.). Email MoonHoangLee@gmail.com for details.

9/16: **ESL Ministry** Rewarding job on Saturdays (9:30am-11:30am, 9/16–12/23) teaching English to immigrants, plus good pay and benefits! Contact MoonHoangLee@gmail.com.

9/16: **Youth Beach Day** (1-5pm, Hunt. Beach). Email christian@journeyec.org for details.

9/22–23: **Stand to Reason Conference** (Biola). Scholarships available for students.

Update: We will repave the parking lot, remodel the foyer, and construct a new parent lounge. We await permits to dispose trailers. If you are led to joyfully give, please make an offering to Journey EC with “Building Fund” in memo.