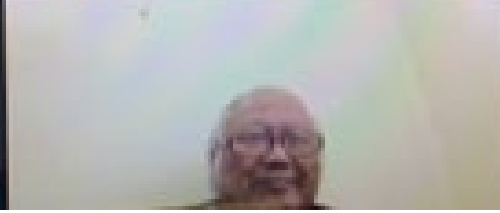
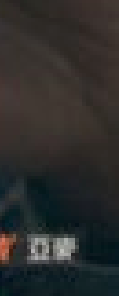
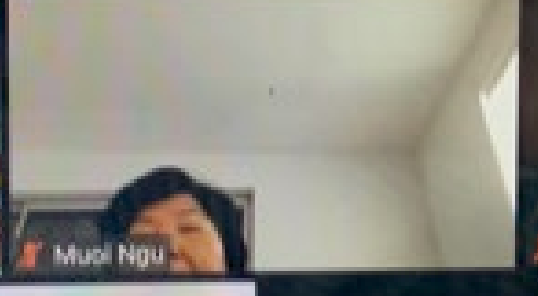
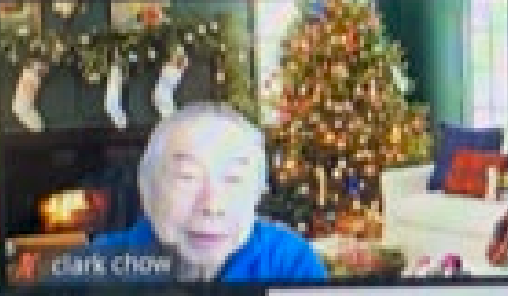
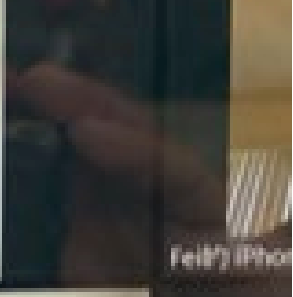
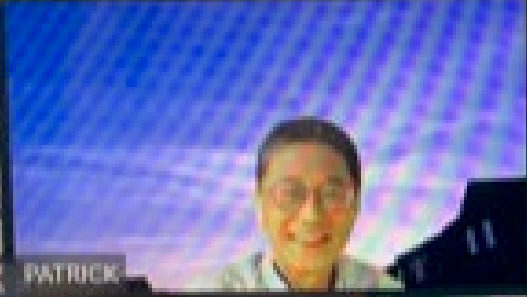
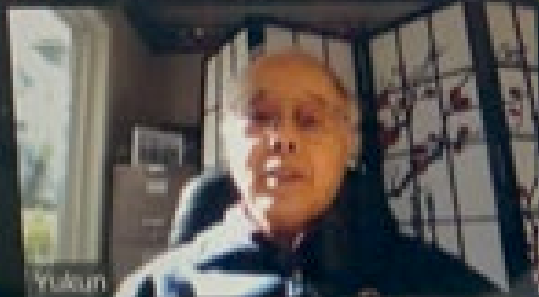
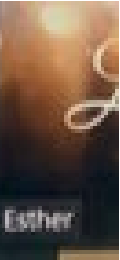
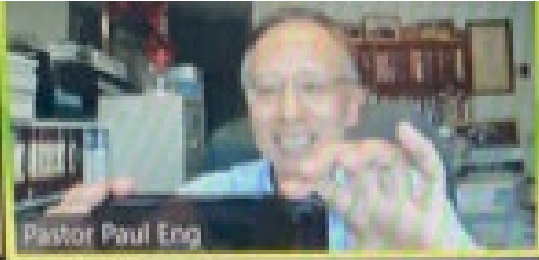


journey

evangelical church

February 21, 2021







Mandarin Ministry

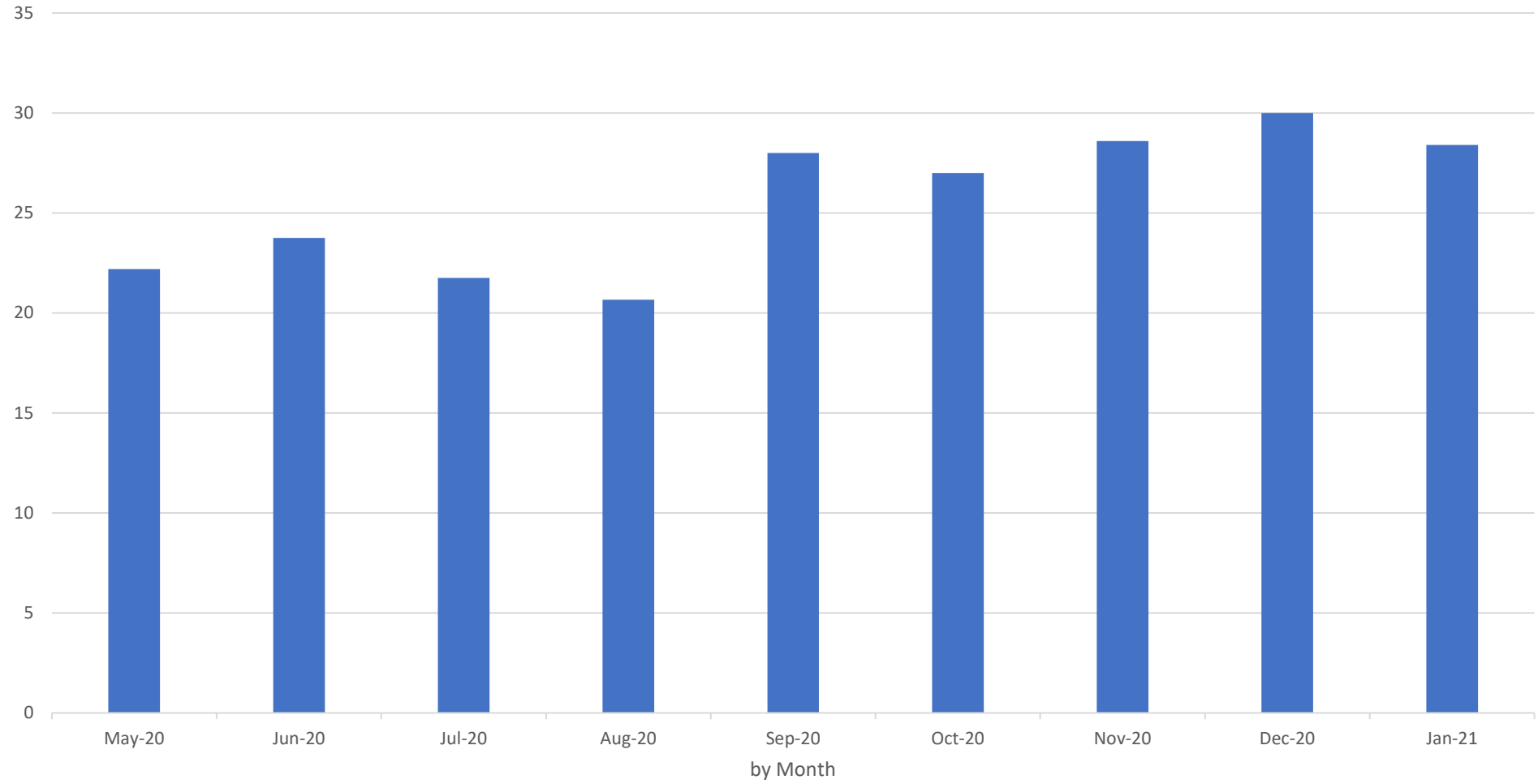


55:58



2021-01-24 15:35:52

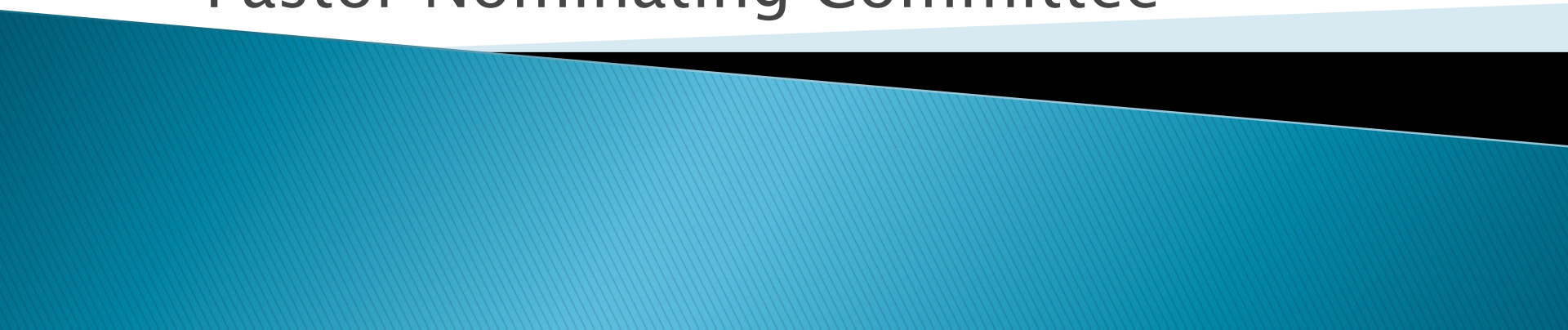
Average Attendance



What's new for Journey with EFCA



What's new for Journey with EFCA

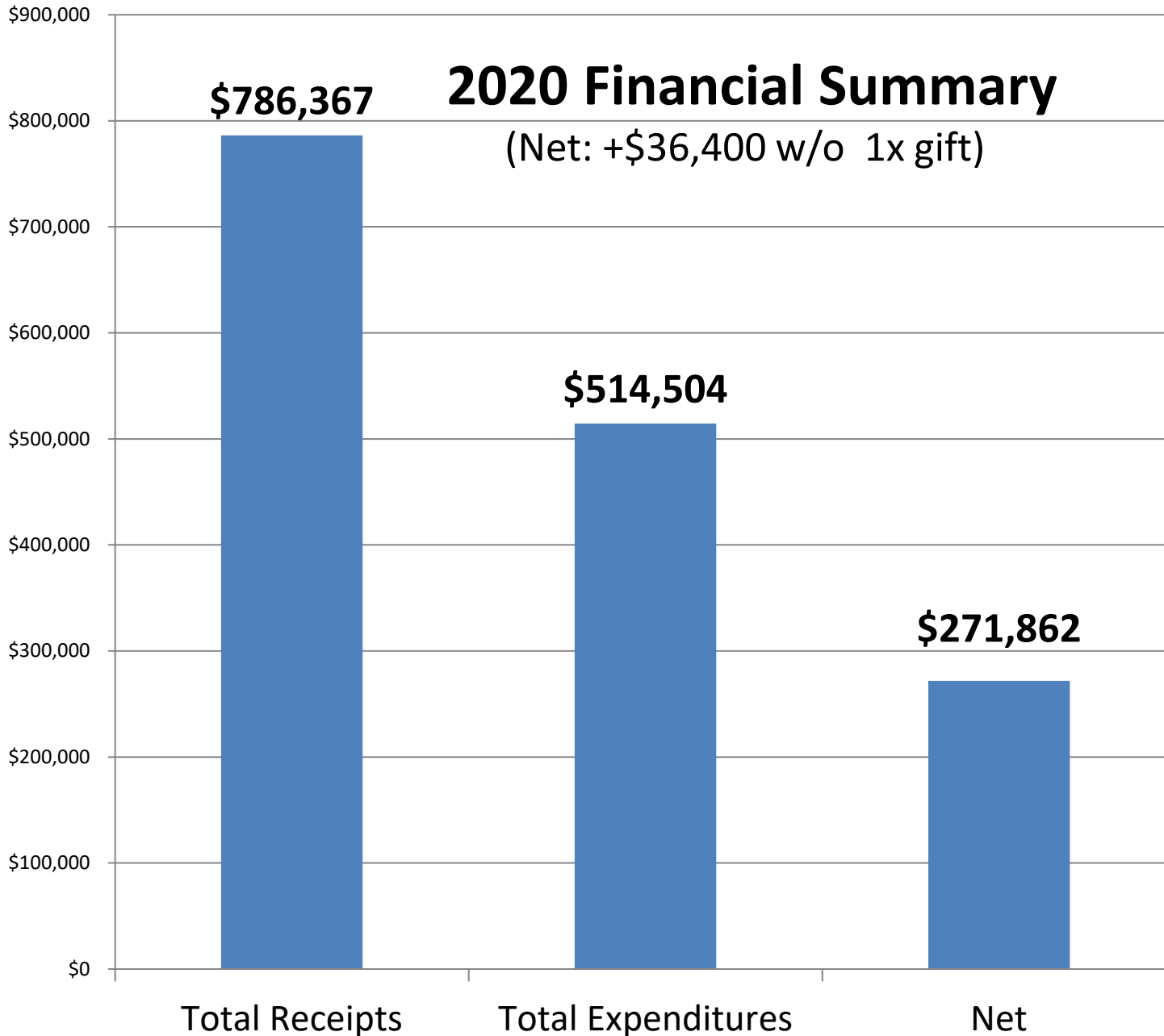
- Church Leadership Team – not Session
 - Communion – led by Pastor Curt
 - Membership Class – late Spring 2021
 - Baptisms and Dedications
 - Pastor Nominating Committee
- 

Financial Update

Fiscal Year 2020
2021 Budget

2020 Financial Summary

(Net: +\$36,400 w/o 1x gift)



2020 Year End
Cash Assets:

\$614,446

Note:

Payroll
Protection
Program =
\$54,200

Missions
\$67,448

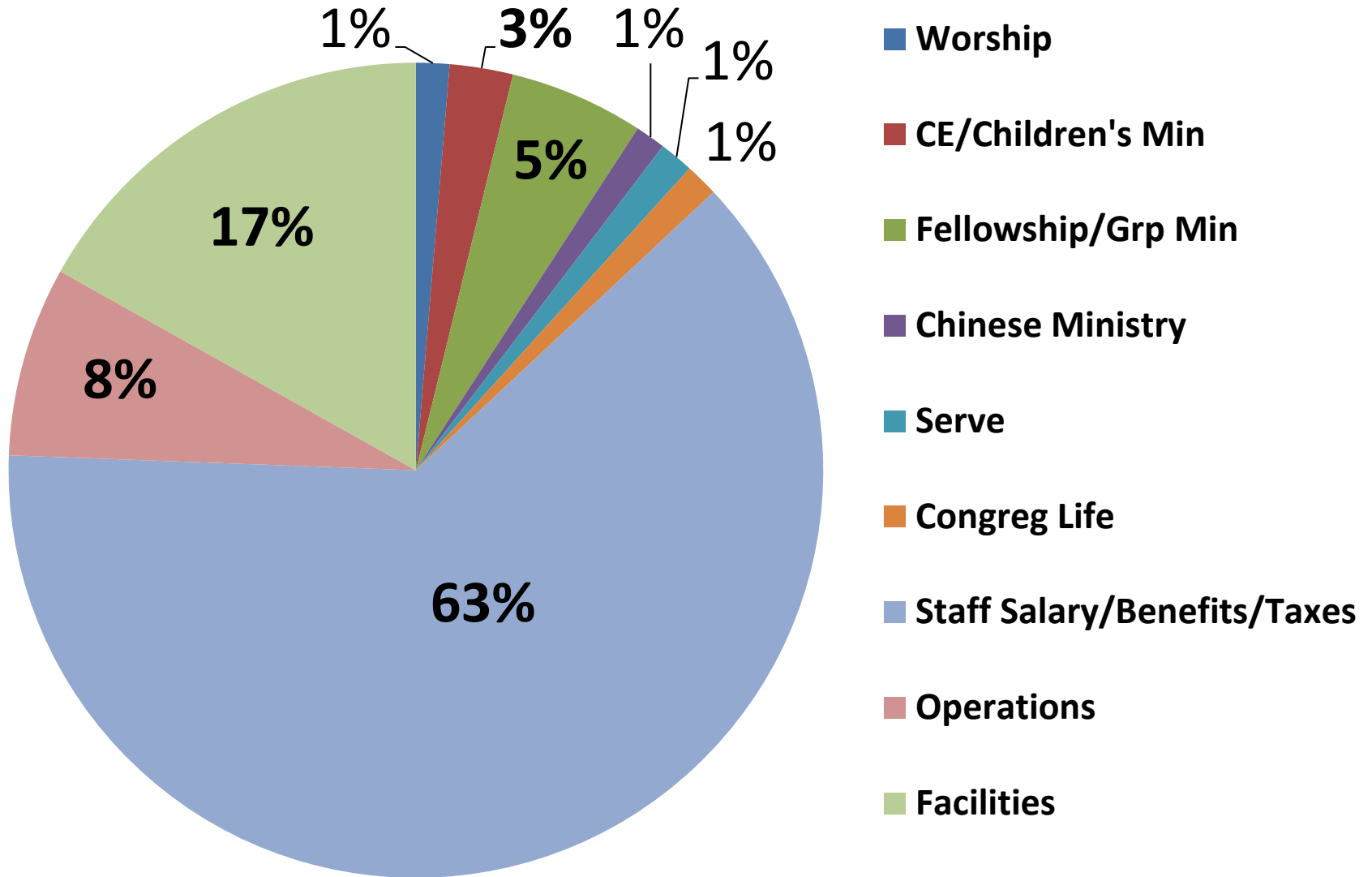
2021 Budget

Worship	\$6,830
CE/Children's Min	\$12,950
Fellowship/Grp Min	\$27,500
Chinese Ministry	\$6,200
Serve	\$7,000
Congreg Life	\$6,800
Staff Salary/Benefits/Taxes	\$322,594
Operations	\$38,825
Facilities	\$87,100
Total	\$515,709

2021 Budget	
Worship	\$6,830
CE/Children's Min	\$12,950
Fellowship/Grp Min	\$27,500
Chinese Ministry	\$6,200
Serve	\$7,000
Congreg Life	\$6,800
Staff Salary/Benefits/Taxes	\$322,594
Operations	\$38,825
Facilities	\$87,100
Total	\$515,709
Missions	\$70,000

Nb: 2021 Payroll Protection Program = \$ 49,037

2021 Budget Categories



Campus Use Update

Expanding on-campus ministries?

Covid-19 Update: Variants & Vaccine

Vaccines

- ▶ Moderna
 - Vaccine Efficacy = 94%
- ▶ Pfizer
 - Vaccine Efficacy = 95%
- ▶ Johnson & Johnson/Janssen
 - *Vaccine Candidate 72% Effective in the US and 66% Effective Overall at Preventing Moderate to Severe COVID-19, 28 Days after Vaccination*
 - *85% Effective Overall in Preventing Severe Disease and Demonstrated Complete Protection Against COVID-19 related Hospitalization and Death as of Day 28*

Variants of Concern (VOC)

- ▶ **B.1.1.7 (UK variant)**
 - Increased infectivity
 - Higher morbidity/mortality
- ▶ **501Y.V2 (South African variant)**
 - ? Increased infectivity
 - **Decreased vaccine efficacy**
- ▶ B.1 (Brazilian variant)
 - ? Increased infectivity
 - ? Decreased vaccine efficacy
- ▶ L452R (B.1.427 or B1.3.429; California variant)
 - ~ 25% of recently sequenced specimens in CA